

## GEMINI POLLUX MANUAL

Thank you for placing your trust in Gemini to equip your bike. To ensure the best performance and longest service life of your Gemini Pollux handlebar, carefully read and follow these installation instructions.

This is a simplified guide, you can download the complete manual from our website in the support section or after the following link: <https://ridegemini.com/en/support/>

⚠ All Gemini products must be installed by a qualified bicycle mechanic using the proper professional tools. Use a calibrated torque wrench when tightening the screws to the specified torque, and check before each exit.

⚠ Gemini assumes no responsibility for improperly installed products. The components of the Gemini bicycle should only be used on non-motorized bicycles.

⚠ Failure to follow these instructions may cause the component to fail. Failure of the components can cause loss of control of the bicycle and result in serious personal injury or death.

⚠ This guide covers only the POLLUX model of GEMINI, it is possible that the images do not match your handlebar version, since these are a general representation. Any questions or questions will always have at your disposal the GEMINI technicians to assist you in our e-mail: [info@ridegemini.com](mailto:info@ridegemini.com)

### EXPECTED USE

⚠ Gemini Pollux has been designed to be mounted on downhill bicycles, surpassing higher loads than a conventional mtb component during the development process, these bicycles allow to travel through more difficult terrain, over bigger obstacles and to make bigger jumps, but Although all this is true, there is no guarantee that a component designed for this use will not break while practicing extreme cycling.

⚠ THE GROUND AND TYPE OF CYCLING FOR WHICH THE DESCENT COMPONENTS ARE DESIGNED IS DANGEROUS FOR ITSELF.

⚠ Adequate equipment will not change that fact. In this type of cycling, bad judgment, bad luck or driving beyond one's capabilities can easily lead to an accident.

Although we manufacture and test our components to be resistant, we can not guarantee by any means that they will survive a fall of 2 meters for the umpteenth time.

There are no standardized regulations regarding jumps, since the circumstances of takeoff, landing, speed, cyclist technique, etc. They are unique. The common sense, the lack of it or the dementia of a cyclist using a Gemini component is not predictable at all, so it is obviously impossible to know how someone's equipment will resist.

### TERMS OF USE

⚠ You need to understand the use to which your handlebar is intended. If you choose a handlebar that does not suit your needs, it can be risky. Using the handlebar incorrectly is dangerous and can lead to death. The NO use of the handlebar in these specified conditions of use would suppose the cancellation of the guarantee.



⚠ Gemini Pollux is designed to withstand the weight of a person up to 110 kg.

⚠ The following information refers to voluntary ASTM F2043-13 regulation from ASTM International.

⚠ Gemini Pollux is a handlebar designed for descent, so it is within

the category 5 ASTM, components designed for jumps, downhill, high speed or aggressive cycling on surfaces in poor condition or landing on smooth surfaces. However, this type of cycling is very dangerous. When practicing it, the bicycle and the components are subjected to an unpredictable effort that can overload the components. If you decide to drive on this type of terrain, you should take the appropriate safety precautions, such as examining the bicycle and replacing the equipment more often. You should also wear full protective gear, such as a full face helmet, shields and body armor.

⚠ BOTH THE DOWNHILL AND OTHER FORMS OF "EXTREME CYCLING" ARE EXTREMELY DANGEROUS. IT COULD SUFFER MAJOR INJURIES OR EVEN DYING IN A SERIOUS ACCIDENT.

⚠ Do you want to avoid all those important risks? Then do not practice this kind of cycling.

#### ⚠ WARNING!

Riding a bicycle is intrinsically dangerous. ALWAYS USE THE HELMET. An unprotected head is very fragile, even for a small blow, but wearing a homologated helmet can reduce the risk. Make sure your bicycle is properly maintained, and that all components are installed correctly and balanced. Drive with caution and within your abilities all the time.

### MOUNTING

⚠ Gemini Pollux handlebars are designed to fit double flattened forks using the BoXXer / Fox 40 Direct Mount pattern (image 1). The upper plates must have undamaged surfaces for a good assembly.

Improper attachment of the handlebar to the fork can cause component failure.

⚠ • Follow the manufacturer's instructions for the fork and steering to install the fork and steering, cutting the fork to the correct length and installing the steering properly.

⚠ In the 20mm versions, and 30 mm. of the Pollux handlebar, the fork's stem can not protrude more than 15mm. on the top plate of the fork to guarantee the perfect coupling of the handlebar.

⚠ Adjust the height of the fork legs leaving at least 2 mm. of separation with respect to the handlebar.

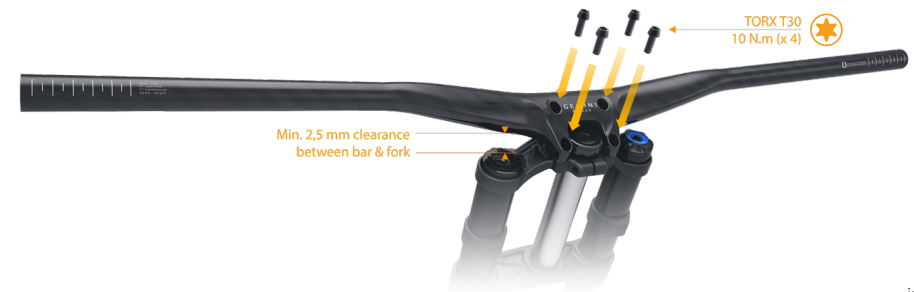


image 2

### RECOMENDATIONS

⚠ • Never mount with the handlebar loose. If the handlebar creaks, please make sure that the handlebar is installed correctly, riding with a loose handlebar can cause the handlebar to fail and / or loss of control of the bicycle, resulting in injury or death.

⚠ • Never apply high pressure water or steam on the handlebar. The steam jet can cause damage to the handlebar itself. Do not use solvents or strong chemicals. Industrial solvents can damage the paint. Do not expose the handlebar to a source of intense heat. The high temperature can cause damage to the handlebar itself.

⚠ • With a calibrated torque wrench, check the fastening screws before each outlet.

⚠ • Perform a quick inspection before each departure for damage (cracks, chips, etc.), if found, do not use the handlebar until the fault has been repaired.

⚠ • In the event of a collision or impact, carefully check your handlebar to detect any visible damage. The handlebars are not indestructible, as any component under variable efforts, has a life of limited fatigue that is proportional to the use and abuse of the handlebar. Inspect your handlebar often. If you have any questions about the integrity of any part, REPLACE IT. If you have any doubts about the status of your Gemini handlebar please do not hesitate to contact us through the e-mail: [info@ridegemini.com](mailto:info@ridegemini.com).

### ⚠ POLLUX HANDLEBAR INSTALLATION

- Position your Pollux handlebar by fitting the screw housings with the same on the fork plate.
- Insert and tighten the screws to 10 Nm. with a calibrated torque wrench with TORX T30 head (image 2)
- Re-tighten all the screws after the first tightening. If you detect any movement of the screws, re-tighten to the indicated torque after the next tightening turn.
- Once the handlebar is installed, perform a low speed test to make sure the assembly has been correct.

⚠ Any item that is to be mounted on the handlebar, such as handles, handles, etc., should not be tightened to more than 3Nm, excessive tightening can facilitate the accumulation of tensions and failure of the handlebar itself.

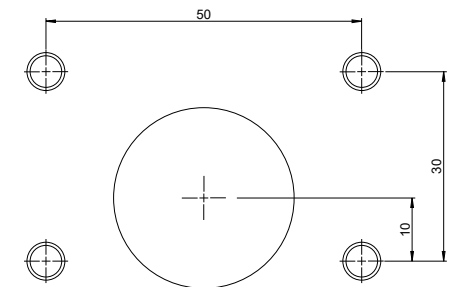


image 1

⚠ • Never modify the handlebar. Do not perform sanding, drilling or filing operations. Any modification made by a mechanic NOT authorized by GEMINI, will void the manufacturing warranty.

#### ⚠ WARNING!

Riding a bicycle is intrinsically dangerous. ALWAYS USE THE HELMET. An unprotected head is very fragile, even for a small blow, but wearing a homologated helmet can reduce the risk. Make sure your bicycle is properly maintained, and that all components are installed correctly and balanced. Drive with caution and within your abilities all the time.

www.ridegemini.com  
GEMINI COMPOSITES S.L.  
C. Granada nº8, 08304, Mataró, Barcelona, España.  
E-mail: info@ridegemini.com

# G E M I N I

HANDCRAFTED COMPONENTS FROM BARCELONA  
www.ridegemini.com

## WARRANTY

- ① Your GEMINI product has been manufactured with great care and using the most advanced manufacturing technology. For this reason, all our products have a two-year warranty for the original purchaser, starting the moment the purchaser receives the product. The purchaser shall be entitled, in the event of a defective product, to the reparation or replacement of the defective product, totally free of charge.
- ① GEMINI warranty claims will be handled by our technician, who will examine the product to verify the nature of the defect and the origin of your warranty process.
- ① GEMINI reserves the right, in those cases where the models have been discontinued, to deliver the successor model in the color range available and, if it was unavailable, a higher-end model.
- ① The validity of the warranty will be connected at all times with the user following properly and diligently the installation and assembly instructions, as well as the maintenance and safety instructions. The warranty does not cover, among other things, accidents, negligence, improper use or unauthorized structural modifications.
- ① For further information and details about our warranty and its coverage, check our Warranty Terms or on the following link: <https://ridegemini.com/en/condiciones-de-venta/>
- ① In case, for instance, of being interested in installing components in your GEMINI products, but you are not sure about their compatibility, you can consult it with us at any moment via our email address info@ridegemini.com.

## REGULATIONS

- ① GEMINI handlebars comply with safety regulations: ISO 4210-5 STEERING TEST METHODS.

## RESPONSIBILITIES

- ① GEMINI shall not be liable for damages caused as a result of fault or negligence not attributable to GEMINI, including but not limited to, the user not following the installation and assembly instructions properly, or the maintenance and safety instructions. GEMINI shall not be liable for damages outside the scope of the application of the legal warranty, nor for those caused by falls or accidents, traffic accidents, overexertion due to excessive load or a different use of the product than the use for which it has been designed, developed, indicated and intended, unauthorized structural modifications, wear, unforeseeable circumstances or of force majeure.


Similarly, GEMINI is exempt from any responsibility against any loss not attributable to a breach of this contract on our part, business losses (including loss of profits, income, contracts, expected savings or unnecessary costs incurred) or any indirect losses or consequential losses which were not reasonably predictable by both parties at the time of the formalization of the contract, as well as any delays or breach of our obligations arising from these conditions if this delay or breach is attributable to circumstances beyond our reasonable control. This provision does not affect your right to receive the product within a reasonable period of time.

The legislation of some countries might not allow certain points of the liability limits stated above. If such legislation applies to you, some or the entirety of these limits may not be applicable to you. In addition, such legislation may also grant you additional rights to those established in this document.

## ADDITIONAL INFORMATION

You can find more information in our different social networks:

FACEBOOK

 [www.facebook.com/ridegemini](https://www.facebook.com/ridegemini)

INSTAGRAM

 <https://www.instagram.com/ridegemini>