

MANUAL GEMINI ÄLSAK

Thank you for placing your trust in Gemini to equip your bike. To ensure the best performance and longest service life of your Gemini ÄLSAK SEAT-POST, carefully read and follow these installation instructions.

You can also download this and other manuals through our website in the support section.

⚠ All Gemini products must be installed by a qualified bicycle mechanic using the proper professional tools. Use a calibrated torque wrench when tightening the screws to the specified torque, and check before each ride.

⚠ Gemini assumes no responsibility for improperly installed products.

⚠ Failure to follow these instructions may cause the component to fail. Failure of components can result in loss of control of the bicycle and result in serious personal injury or death.

⚠ This guide covers only the Gemini ÄLSAK model, it is possible that the images do not match your seat-post's specific size, since these are a general representation. If you have any doubt or question you have at your disposal the technicians of GEMINI to assist you through our e-mail: info@ridegemini.com

TERMS OF USE

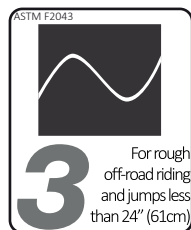
⚠ You need to understand the use to which your seat-post is intended. If you choose a seat-post that does not suit your needs, it can be risky. Using the seat-post incorrectly is dangerous and can lead to death. The NO use of the seat-post in these specified conditions of use would suppose the cancellation of the guarantee.

⚠ Gemini ÄLSAK is designed to withstand the weight of a person weighing up to 90 kg.

⚠ Never modify the seat-post. Do not perform sanding, drilling or filling operations. Any modification made by a mechanic NOT authorized by GEMINI, will void the manufacturing warranty.

The following information refers to voluntary ASTM F2043-13 regulation from ASTM International.

Gemini ÄLSAK is a seat-post within the category 3 ASTM. This is a set of conditions for operation of a bicycle/component that includes Condition 1 and Condition 2 as well as rough trails, rough unpaved roads, and rough terrain and unimproved trails that require technical skills. Jumps and drops are intended to be less than 61 cm (24 in.).



EXPECTED USE

⚠ Gemini ÄLSAK has been designed to be assembled, amongst others, on bicycles that can ride on trails, over obstacles such as roots and stones and give jumps of up to 61 cm, however, there is no guarantee that a component designed for this use will not break while practicing this type of cycling.

⚠ An adequate equipment will not decrease the implicit dangers of the cycling modality itself. Bad judgment, bad luck or driving beyond one's capabilities can easily lead to an accident. Although we manufacture and test our components to be resistant, we can not guarantee by any means that they will survive a fall for the umpteenth time.

There are no standardized regulations regarding jumps or falls, since the circumstances of takeoff, landing, speed, cyclist technique, etc. they are unique. The common sense, the lack of it or the negligence of a cyclist using a Gemini component is not predictable at all, so it is obviously impossible to know how a foreign's equipment will behave.

⚠ !WARNING!

Riding a bicycle is intrinsically dangerous. ALWAYS USE THE HELMET. An unprotected head is very fragile, even for a small blow, but wearing an homologated helmet can reduce the risks. Make sure your bicycle is properly maintained, and that all components are installed correctly and balanced. Drive with caution and within your abilities all the time.

INSTALLATION

⚠ INSTALLATION OF THE ÄLSAK SEAT-POST ON YOUR BICYCLE'S FRAME

- Check that the inner diameter of the post tube in the frame fits the size of your GEMINI seat-post.
- Check in the manual of your bicycle, that there is no particularity or incompatibility between your clamping system and a carbon fiber seat-post.
- Make sure the frame's hole is clean and free of external particles, and polish the edge if there are any burrs or imperfections.
- Applying uniform pressure, push the seat-post into the frame's seat tube from above. Avoid rotation.
- Respect the clamping range defined by the rear minimum and maximum insertion marks, since this is the only area reinforced specifically to resist tightening stresses; to clamp the seat-post outside the clamping range can cause damage to the cyclist as well as to third parties, and invalidate the guarantee. **Image 3.**
- Make sure that the tightening torque of the seat-post clamp's bolt does not exceed 3Nm.

⚠ Align the seat-post with your bicycle considering that its rear face is the one that contains the decals corresponding to the clamping range. **Image 3.**

⚠ INSTALLATION OF YOUR SADDLE ON THE ÄLSAK SEAT-POST

- The ÄLSAK seat-post's clamping mechanism can be used both for round rails up to 7mm diameter, and also for highly oval rails up to 11mm height.
- Please read the use instructions of the saddle manufacturer to know whether any special features must be observed.
- Introduce each bolt into the hole each upper jaw; screw heads have to be oriented in the upper flat parts of each upper jaw. **Image 1.**
- Pre-fasten softly each bolt with each cylindrical pivot, in order to obtain 2 fixed assemblies of bolt-jaw-pivot. **Image 1.**
- Introduce each pre-fastened assembly through the circular holes from the top part of the seat-post. The bolts heads and the jaws must remain on the external side of the seat-post, while the pivots are kept inside. Then, translate the assemblies through the linear track alongside the hole, all the way up to the seat-post ends. Let the bolts free to be able to position the saddle. **Image 2.**

- Make sure the pivot rests on the inner surface of the seat-post. Its inner orientation must be rotated 90° from its entering orientation through the hole. This will be its optimal position to be clamped. **Image 2.**
- Place the inferior cradle in the circular track at the top center of the post. **Image 2.**
- Rest the saddle rails on the inferior cradle, orienting it properly with respect to the seat post, and then adjust the pre-fastened assemblies until both jaws are above the saddle rails, and perpendicular to them.
- Slightly tighten the bolts to create an initial preload on the saddle clamping. Make sure that both the upper jaws and the inferior cradle exert pressure within the specified range of the rails of the saddle for being fixed. Then, adjust the angle and offset of the saddle in relation to the post.
- Make sure that the seat clamp tightening torque does not exceed 3Nm. You can tighten the bolts with either a T25 Torx key or a 7mm hex key.

RECOMMENDATIONS

- ⚠ • Apply specific grease for carbon fiber in all tightening areas with carbon fiber elements involved.
- ⚠ • Never ride with a loose seat-post. If it creaks, please make sure the seat-post is installed correctly; riding with a loose seat-post can result in failure of the seatpost and/or loss of control of the bicycle, resulting in injury or death.

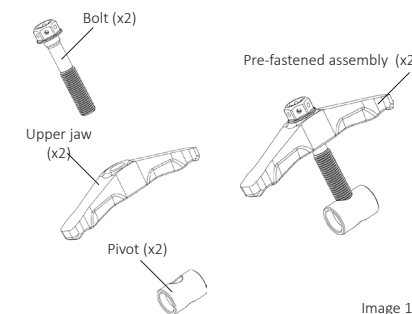


Image 1

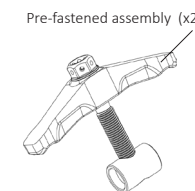


Image 2

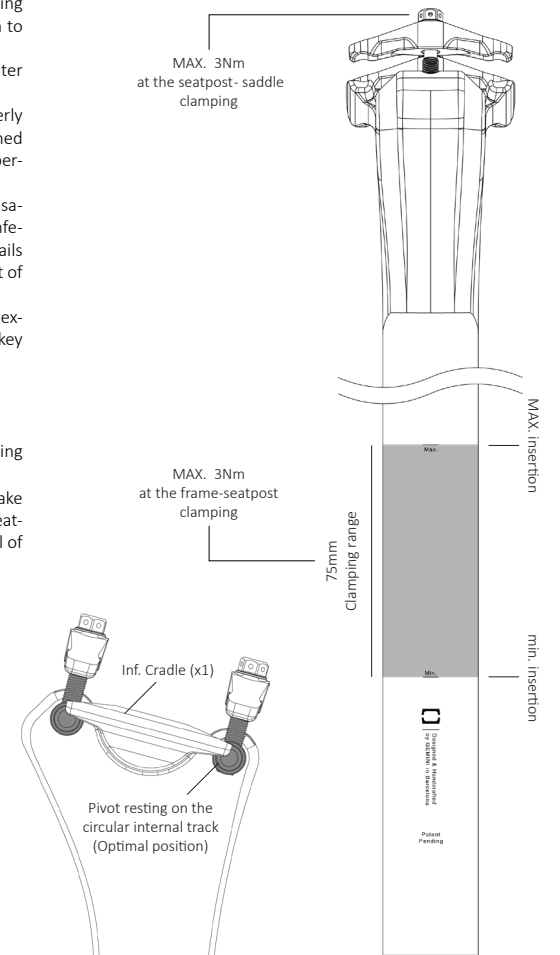


Image 3

- ⚠ • Never apply high pressure water or steam to the post. The steam jet can cause structural damage. Do not use solvents or strong chemicals. Industrial solvents can damage the paint. Do not expose the post to a source of intense heat. The high temperature can cause damage to the seatpost itself.
- ⚠ • Using a calibrated torque wrench, check the mounting bolts before each ride.
- ⚠ • Carry out a quick inspection before each ride in search of damage (cracks, chips, etc.), if found, do not use the seat-post until the issue has been repaired.
- ⚠ • In case of a crash or impact, carefully inspect your post for any visible damage. GEMINI components are not indestructible, like any component under variable stress, they have a limited fatigue life that is proportional to their use and abuse. Inspect your seat-post often. If you have any doubt about the integrity of any part, REPLACE IT. If you have any other questions, you can contact us via e-mail: info@ridegemini.com.

www.ridegemini.com
GEMINI COMPOSITES S.L.
Camí del Mig nº25, 1º-2ª, 08349, Cabrera de Mar, Barcelona, España.
E-mail: info@ridegemini.com

G E M I N I

HANDCRAFTED COMPONENTS FROM BARCELONA
www.ridegemini.com

WARRANTY

- ① Your GEMINI product has been manufactured with great care and using the most advanced manufacturing technology. For this reason, all our products have a three-year warranty for the original purchaser, starting the moment the purchaser receives the product. The purchaser shall be entitled, in the event of a defective product, to the reparation or replacement of the defective product, totally free of charge.
- ① GEMINI warranty claims will be handled by our technician, who will examine the product to verify the nature of the defect and the origin of your warranty process.
- ① GEMINI reserves the right, in those cases where the models have been discontinued, to deliver the successor model in the color range available and, if it was unavailable, a higher-end model.
- ① The validity of the warranty will be connected at all times with the user following properly and diligently the installation and assembly instructions, as well as the maintenance and safety instructions. The warranty does not cover, among other things, accidents, negligence, improper use or unauthorized structural modifications.
- ① For further information and details about our warranty and its coverage, check our: <https://ridegemini.com/en/terms-of-sale/>
- ① In case, for instance, of being interested in installing components in your GEMINI products, but you are not sure about their compatibility, you can consult it with us at any moment via our email address: info@ridegemini.com.

NORMATIVE

- ① GEMINI seatposts accomplish the safety regulations:
ISO 4210-9 SADDLE AND SEAT-POST TEST METHODS.

LIABILITY

- ① GEMINI shall not be liable for damages caused as a result of fault or negligence not attributable to GEMINI, including but not limited to, the user not following the installation and assembly instructions properly, or the maintenance and safety instructions. GEMINI shall not be liable for damages outside the scope of the application of the legal warranty, nor for those caused by falls or accidents, traffic accidents, overexertion due to excessive load or a different use of the product than the use for which it has been designed, developed, indicated and intended, unauthorized structural modifications, wear, unforeseeable circumstances or of force majeure.

Similarly, GEMINI is exempt from any responsibility against any loss not attributable to a breach of this contract on our part, business losses (including loss of profits, income, contracts, expected savings or unnecessary costs incurred) or any indirect losses or consequential losses which were not reasonably predictable by both parties at the time of the formalization of the contract, as well as any delays or breach of our obligations arising from these conditions if this delay or breach is attributable to circumstances beyond our reasonable control. This provision does not affect your right to receive the product within a reasonable period of time.

The legislation of some countries might not allow certain points of the liability limits stated above. If such legislation applies to you, some or the entirety of these limits may not be applicable to you. In addition, such legislation may also grant you additional rights to those established in this document.

ADDITIONAL INFORMATION

You can find more information on our different social networks and on our website:

-  FACEBOOK www.facebook.com/ridegemini
-  INSTAGRAM www.instagram.com/ridegemini
- WEB www.ridegemini.com